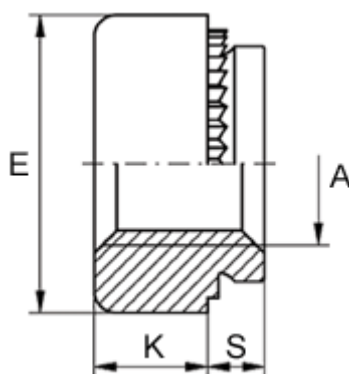


Article number: 12501000050100

Description: KLEE-coil 501 000 050.100  
M5 Hardened, zinc-pl./chr. yellow

## Measures

---



Female thread A	= M5
Height K	= 2.0
Max recess height	= 1.0
Min distance to edge	= 4.0
Outer diameter E	= 9.0
Plate thickness	= 1.1 to 1.4
Recommended bore diameter +0.05	= 6.00